

AREA: CULLINGWORTH

Site count	Capacity Overview	Headline Analysis	Detailed Tables
-------------------	--------------------------	--------------------------	------------------------

ALL SITES		SITES WITHIN TRAJECTORY (DELIVERABLE OR DEVELOPABLE)	
Total No Of Sites	5	No of Green Field Sites	1
Total Area (Ha)	14.76	No Of PDL Sites	3
RUDP Phase 1 Housing Sites	0	Mixed PDL / Green Field	1
RUDP Phase 2 Housing Sites	0		
Sites with Outline / Full pp for Housing	0	Wholly / mainly within flood zone 2	0
Suitable Now	3	Wholly / mainly within flood zone 3a	0
Potentially Suitable (Policy Constraints)	2	Wholly / mainly within flood zone 3b	0
Potentially Suitable (Physical Constraints)		Within / partly within green belt	1
Unsuitable		Within / partly within local wildlife designations	1
		Within partly within local green space designations	0

DWELLING CAPACITY (Based on Median of Upper and Lower)							
	No Of Sites	Hectares	Short	Medium	Long	Total	% of District Total
BRADFORD NE	5	14.76	79	152	0	231	0.06

HEADLINES / MAIN POINTS

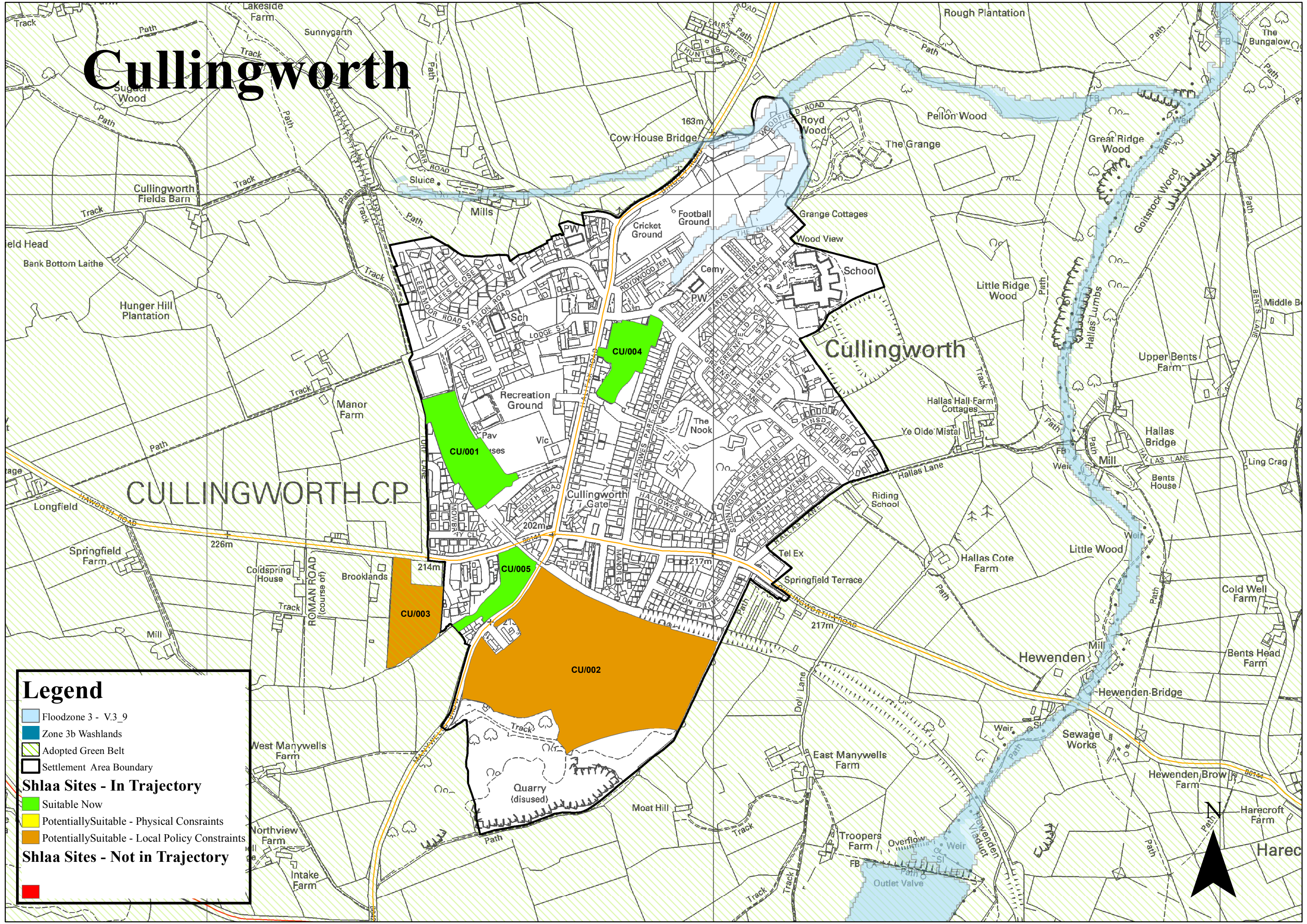
**4 of the 5 potential sites in Cullingworth are underused/vacant sites formerly occupied by business uses, 1 site is green belt. Overall brownfield percentage over the 17 years of the trajectory assuming that those sites contributing to the trajectory bear new homes is 65.6%.
The redevelopment of the Manywells Industrial estate with an improved business unit offer may allow the current vacant premises to be redeveloped for homes in the short to medium term without the loss of any significant swathes of green belt, unless local need suggests otherwise.**

	‘Deliverable Sites’			‘Developable Sites’								
	SHORT TERM Years 1-6			MEDIUM TERM Years 7-12			LONG TERM Years 13-17			TOTAL		
	Lower Forecast	Upper Forecast	Mid Point	Lower Forecast	Upper Forecast	Mid Point	Lower Forecast	Upper Forecast	Mid Point	Lower Forecast	Upper Forecast	Mid Point
Cullingworth Trajectory Total	75	83	79	136	168	152				211	251	231
Green Field				42	57	49.5				42	57	49.5
Mixed	40	40	40	20	20	20				60	60	60
PDL	35	43	39	74	91	82.5				109	134	121.5
PDL Consolidated*	55	63	59	84	101	92.5				139	164	151.5
PDL %	73.3	75.9	74.6	61.7	60.1	60.8				65.8	65.3	65.6
Cullingworth Residual										0	0	0
Residual – Mixed												
Residual PDL												
Cullingworth Capacity Total										211	251	231

	No of Sites	Hectares	Dwellings
Suitable Now	3	2.98	113
Potentially Suitable – Policy Constraints	2	11.78	109.5
Potentially Suitable – Physical Constraints			
Unsuitable Sites			

		SHORT TERM			MEDIUM TERM			LONG TERM			TOTAL		
		Lower Forecast	Upper Forecast	Mid Point	Lower Forecast	Upper Forecast	Mid Point	Lower Forecast	Upper Forecast	Mid Point	Lower Forecast	Upper Forecast	Mid Point
Cullingworth Trajectory Total		75	83	79	136	168	152				211	251	231
	Suitable Now	35	43	39	74	91	82.5				109	117	113
	Potentially Suitable (Policy Constraints)	40	40	40	62	77	69.5				102	117	109.5
	Green Belt				42	57	49.5				42	57	50
	Other	40	40	40	20	20	20				60	60	60
	Potentially Suitable (Physical Constraints)												
Residual Supply*													
Cullingworth Residual Supply Total													
	Potentially Suitable (Policy Constraints)												
	Green Belt												
	Other												
	Potentially Suitable (Physical Constraints)												
Cullingworth Capacity Total											211	251	231

Cullingworth



Legend

- Floodzone 3 - V.3_9
- Zone 3b Washlands
- Adopted Green Belt
- Settlement Area Boundary
- Shlaa Sites - In Trajectory**
 - Suitable Now
 - Potentially Suitable - Physical Constraints
 - Potentially Suitable - Local Policy Constraints
- Shlaa Sites - Not in Trajectory**

